



**WORKSOP COLLEGE**

---

# GCSE Curriculum 2022/23

---

Our GCSE curriculum is designed to be flexible, offering an extensive choice across a wide range of subjects to suit all learners.

All pupils are prepared for GCSEs in the following core subjects.

1. English Language
2. Mathematics
3. Combined Science (Some students study Triple Science)

Some pupils will study English Literature - a decision is made about who will be entered for English Literature at the end of Autumn Term in Y10.

Pupils are required to choose four options in addition to the core subjects.

When choosing options, it is important that pupils pick subjects that they enjoy and are good at, however it is also important to keep options open for their future.

Tutors will help support pupils in making an appropriate decision for their ability level.

Look out for the following symbols, which denote which subjects are which.



# Our subjects

## Core

English Language	Pg.4
Mathematics	Pg.4
Science	Pg.5

## Humanities

Classical Civilisation	Pg.6
Geography	Pg.6
History	Pg.7
Philosophy & Ethics	Pg.7

## Languages

French	Pg.8
Latin	Pg.8
Spanish	Pg.9

## Arts and Practical

Art & Design: Fine Art	Pg.10
Art & Design: Photography	Pg.10
Computer Science	Pg.11
Design & Technology	Pg.11
Drama and Theatre Studies	Pg.12
Food Preparation and Nutrition	Pg.12
Music	Pg.13
Physical Education	Pg.13

## Social Sciences

Business	Pg.14
Child Development	Pg.14
Psychology	Pg.15

Supervised Study	Pg.15
------------------	-------



## English Language

iGCSE

2 years

Pearson



One of our core subjects at GCSE, the design of the new Edexcel International GCSE (9–1) English Language A qualification aims to extend students' knowledge by broadening and deepening skills.

The qualification tests a broad range of skills through the study of an interesting and varied range of material in the Anthology. The materials address a range of cultural backgrounds.

The course will provide appropriate stretch and challenge whilst ensuring, as far as possible, that the assessment and texts are accessible to the full range of students.

In preparation for the exam, you will develop the skills of interpretation, analysis and evaluation. Text types studied will include a range of non-fiction forms, and students will be given the opportunity to practise a range of non-fiction writing techniques and planning and proofreading skills.

Everything you learn to do in reading and writing, you will also learn to powerfully transfer to speaking and listening - skills so prized in the modern world.

### This subject is for you

Because you will develop your abilities to: read and respond to materials from a variety of sources; make comparisons between texts and analyse the ways in which writers achieve their effects; and, construct and convey meaning in written language, matching style to audience and purpose.

### Assessment

40 % coursework  
60 % exam

### For more information

Mr Sackey-Ambler, Head of English  
[t.sackey-ambler@wsnl.co.uk](mailto:t.sackey-ambler@wsnl.co.uk)



## Mathematics

GCSE

2 years

Pearson



During this course, you'll learn about number, algebra, shape & space and handling data. You will be encouraged to problem-solve and to enjoy the beauty of maths.

You'll be expected to adopt strong study skills and you'll enjoy your progression as you're able to understand increasingly more demanding mathematical reasoning.

Maths is a skill that's developed through practice – so you can expect a variety of different approaches to help develop your problem-solving skills, as well as regular maths 'clinics' and access to specialist teachers.

You can expect lots of teamwork and to be solving problems alongside your peers – you'll be expected to help others and to encourage your fellow classmates.

### This subject is for you

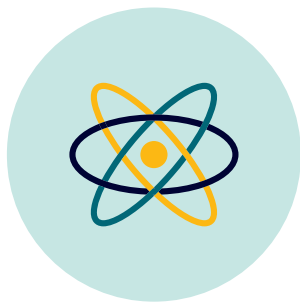
Because you'll learn that it's acceptable to fail as often as you succeed. You'll learn to be independent and develop resilience in the way you work on your prep. You'll discover the thrill of success when you master a problem.

### Assessment

100% exam

### For more information

Mr Turner, Head of Maths  
[j.turner@wsnl.co.uk](mailto:j.turner@wsnl.co.uk)



---

## Science

---

GCSE

---

2 years

---

AQA

---



Study a range of scientific principles across a variety of areas. During Biology, you'll look at cells, infection and response, biogenetics, homeostasis and response, inheritance, variation and evolution. In your Chemistry lessons you'll visit atomic structure and the periodic table; quantitative chemistry, chemical analysis and chemistry of the atmosphere. In Physics, you'll look at energy, electricity, particle model of matter, atomic structure, forces, waves and magnetism.

With the majority of lessons taking place in one of our eight newly-refurbished science labs, you'll work in small groups, as well as on your own individual projects.

Outside the classroom, you can expect field trips to places of scientific interest, as well as to science fayres and exhibitions.

Double science is offered to everyone taking this GCSE, with Triple Science offered to those who show significant aptitude for the subject.

### **This subject is for you**

Because you'll enjoy understanding why things work the way they do! You'll be excited by the natural world and will be keen to prove or disprove your theories based on sound research and presentation of the facts. You'll enjoy working as part of a team and will have a keen passion for science.

### **Assessment**

100% exam

### **For more information**

Miss Dalby, Head of Science  
[s.dalby@wsnl.co.uk](mailto:s.dalby@wsnl.co.uk)







## Classical Civilisation

GCSE

2 years

OCR



This GCSE has something for everyone: art, history, philosophy, and politics. All these concepts are brought together and explored through the cultures of ancient Greece and Rome. You don't need to have studied Classics or Latin before, you can do this GCSE entirely from scratch and you don't need to know any foreign languages, everything is in English.

The Homeric World: beginning with the Bronze Age civilisation of Mycenae you will undertake an in-depth study of archaeological evidence from Greece. The Trojan War took place at the end of this period of civilisation. The poet Homer wrote about the return journey of the hero Odysseus to his homeland of Ithaca after fighting in the Trojan War. On the way he meets gods and goddesses, fierce tribes of warriors and man-eating monsters as he tries to return to his beloved wife, Penelope. Selected chapters are studied, and students will be expected to understand the plot, the characters and their relationships, and the role of the gods.

Women in the Ancient World: this is a new and innovative topic that explores both mythical

figures from Greek and Roman legend but also uses literary, archaeological and artistic material to analyse the upbringing and education of women, their political rights, roles and duties as well as considering male attitudes towards women and how this has shaped our understanding of how women lived and were represented in the ancient world.

### This subject is for you

If you have an interest in the ancient world and like to piece together evidence, think critically and problem solve. As such it will support any other subject since you will learn how to answer comprehension-style exam questions and develop essay writing skills.

### Assessment

100% Exam

### For more information

Ms Gill, Head of Classics  
g.gill@wsnl.co.uk



## Geography

GCSE

2 years

Cambridge iGCSE



Learn how features of the natural landscape are formed and how they evolve over time. You'll look into dynamics of population, exploring where people live, why they live there and what causes the movements of people. You'll also explore the ways in which humans use the natural environment for economic gain and the impact on the world we live in.

You will use real-world examples to demonstrate the concepts you've grasped. You'll develop your numeracy skills through graph interpretation and simple statistical analysis, as well as becoming adept at proving your point through explanation.

As well as fieldtrips to see theory in practice, you'll also use technology to create podcasts and animation movies. The majority of learning

takes place in the classroom, but you can expect a number of excursions, to help support your learning.

### This subject is for you

If you enjoy learning about the world around you, are interested in how the landscape is formed and why the people are distributed as they are. You will enjoy being challenged and will be excited by the idea of proving a theory or idea based on your sound research.

### Assessment

27.5% coursework  
72.5% exam

### For more information

Mr James, Head of Geography  
r.james@wsnl.co.uk



---

## History

---

GCSE

---

2 years

---

Cambridge iGCSE

---



Study IGCSE History and you will gain a real understanding of key historical moments and their impact on our daily lives today. You'll learn in depth about the Great War – from the big battles to the tinned jam - and the quest for peace in the years that followed.

You'll look at peace treaties, the League of Nations and the collapse of peace as a result of the actions of Hitler and Mussolini. You'll explore the Cold War in Europe and the Gulf – from the Shah to Saddam. You will study original sources from a range of different media – from posters, cartoons and diaries, to novels, biographies and textbooks.

You'll discuss, debate and share your ideas, using ICT to help your subject come to life. Understanding the deep impact that historical figures and events have made on all aspects of our lives is at the heart of this fascinating subject.

### This subject is for you

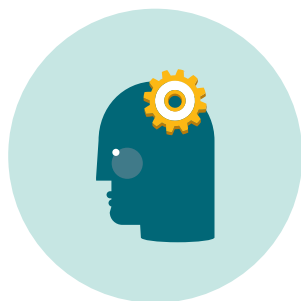
If you have an interest in studying how history affects, and is affected by, both 'important' and 'ordinary' people, and in seeing how societies, people and cultures change - and don't - over time. You won't be afraid of challenge and will enjoy articulating your point – using research to back up your argument. You'll be excited by the past and keen on passionate discussion.

### Assessment

100% exam

### For more information

Mr Axelby, Head of History  
[a.axelby@wsnl.co.uk](mailto:a.axelby@wsnl.co.uk)



---

## Philosophy & Ethics

---

GCSE

---

2 years

---

AQA

---



The GCSE is made up of four topics studied over two years: Philosophy, Ethics, Christianity and Islam. Each topic goes into detail – and you'll use case studies drawn from the modern world around us to examine the nature of knowledge and faith, and how religion and philosophy influence our everyday lives.

You'll spend your time thinking about 'big ideas' and how they relate to the decisions we make. You'll discuss the nature of 'truth' and the role that belief might play in contemporary societies.

You'll be encouraged to develop and explore your own beliefs, whatever they might be - and to write, think, and talk about belief systems.

This is a relevant and important subject for many areas of life and will help you become a reasoned person, with well-justified opinions.

### This subject is for you

If you enjoy the idea of discussing great philosophical questions about the purpose and meaning of life - and how that affects the modern world around us.

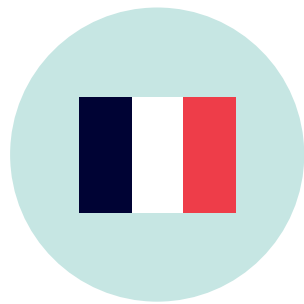
You'll enjoy debating 'big issues' such as terrorism, relationships, peace & war, justice, tolerance, and faith - and you'll be excited to challenge your own way of thinking through understanding the mindset of others.

### Assessment

100% exam

### For more information

Miss Lane, Head of  
Philosophy & Ethics  
[h.lane@wsnl.co.uk](mailto:h.lane@wsnl.co.uk)



---

## French

---

GCSE

---

2 years

---

AQA



With a significant number of French-speaking countries across the world, this GCSE will help unlock a number of opportunities, as well as helping you explore this beautiful culture in more detail.

You'll develop a better understanding of language in general, as well as developing and expanding your knowledge of vocabulary. You'll learn about the structures in the French language and will develop greater competence and confidence in using French, in both written and spoken forms.

You'll begin to understand the impact the language has made across the world, as well as an appreciation of the cultural aspects of the countries where French is spoken.

You'll develop an understanding of modern French society and take part in overseas trips and field studies.

You will need to take an active part in lessons, listening carefully, contributing to discussions and fulfilling your projects in a small group environment.

### **This subject is for you if**

You enjoy challenge, variety and communication. You'll enjoy discovering new things – as well as connecting with other people and cultures. You won't mind being challenged and will have an aptitude for problem-solving.

### **Assessment**

100% exam

### **For more information**

Miss Rodriquez, Head of Modern Foreign Languages  
[m.rodriquez@wsnl.co.uk](mailto:m.rodriquez@wsnl.co.uk)



---

## Latin

---

GCSE

---

2 years

---

OCR



Latin is a fascinating subject - designed to inspire, motivate and challenge. This GCSE brings you up close and personal to the Romans: how they lived and loved along with their entertainment, customs and beliefs.

During your GCSE in Latin, you will gain knowledge and understanding of the Roman world through reading and responding to its language, literature, and culture. You will learn to read, analyse and respond to un-adapted Latin on various different subjects such as education, entertainment, love and marriage and the lives of the rich and poor throughout the Roman Empire. We will read selections of texts from a variety of different Roman authors. The literature is also accompanied by a prescribed selection of source material (e.g., paintings, mosaics, sculptures, buildings, graffiti) and you will be asked to analyse and respond to these sources, making connections between literary and archaeological evidence from the Roman world.

This GCSE also encompasses the study of Roman civilisation. This part of the course is entirely in English. You will have to analyse and respond to ancient source material on different aspects of Roman life such as entertainment and leisure, Religion, daily life in a Roman town and Roman Britain.

### **This subject is for you**

If you enjoy puzzles, reading and critical thinking. You will enjoy learning about life in the ancient world, languages, and reading.

### **Assessment**

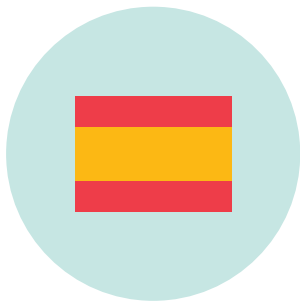
Students should be aware that they will never be examined in speaking and listening in Latin.

100% exam

### **For more information**

Ms Gill, Head of Classics  
[g.gill@wsnl.co.uk](mailto:g.gill@wsnl.co.uk)





---

## Spanish

---

GCSE

---

2 years

---

AQA

---



Gain a deep understanding of Spanish culture and its influences on the world. Discover the origins of Spanish and how language evolves over time.

You'll develop a better understanding of language in general, as well as being able to expand your knowledge of vocabulary. You'll begin to understand the different structures that exist in language, and to develop competence and confidence in using Spanish in both written and spoken forms.

Develop a better understanding of modern Spanish society and will take part in overseas trips and field studies.

You should expect to take an active part in lessons, listening carefully, contributing to discussion

and fulfilling work independently and as part of a small group.

### **This subject is for you**

If you enjoy challenge and variety. You'll have an aptitude for communication and will enjoy thinking for yourself. You'll be excited about other cultures and will enjoy the challenge of conversing in another language.

### **Assessment**

100% exam

### **For more information**

Miss Rodriquez, Head of  
Modern Foreign Languages  
[m.rodriquez@wsnl.co.uk](mailto:m.rodriquez@wsnl.co.uk)





---

## Fine Art: Art and Design

---

GCSE

---

2 years

---

AQA

---



Learn how to draw from direct observation, to use your imagination and to take photographs to develop your work, as well as working from secondary sources.

You'll be introduced to a range of media, processes and approaches, responding to historical and contemporary artists, and working in a range of forms - such as sculpture, painting, drawing, mixed-media, conceptual art, printing, textiles and graphics.

There is an expectation that you be willing to accept challenge, learn from mistakes and take risks.

You'll learn how to explore ideas - developing personal and meaningful outcomes. Key elements of Art will be explored, such as line, shape, tone, form, colour, texture, pattern, symmetry and balance.

Y10 projects are initially quite prescriptive in nature, however, as you move into Y11 - expect to develop your own brief, to select artists of your own and to work more independently.

The Art School is open to all Art students during lunchtimes, priority sessions and until 8.30pm on a Thursday night each week. Every half-term there is a life class you'll be encouraged to attend. There is an expectation that Art students will spend at least two hours beyond taught lessons each week developing their work. Drawing is an essential part of all Art courses, as well as the ability to analyse the work of others, expressing your thoughts and opinions clearly in written form as well as visually.

### **This subject is for you**

If you don't mind working hard. You're creative and comfortable working independently. In Art, there is no such thing as right and wrong - so you'll enjoy exploring ideas and learning to be selective, creating displays of your own work in mini pop-up exhibitions.

### **Assessment**

60% coursework  
40% exam



---

## Photography: Art and Design

---

GCSE

---

2 years

---

AQA

---



During this GCSE, you will learn about the rules of composition and when to break them. You will learn to operate your camera confidently and control it in order to capture the image you want, rather than working in auto and letting the camera decide. You'll learn the effects of light on a photograph and how it makes a difference to the outcome of a shot.

You will work in our spacious studio, but also take your work outdoors - visiting urban and rural locations to create original artwork of your own in response to historical and contemporary artists. Your work will be personal and meaningful, developing themes such as structures, animals and movement in your coursework projects.

Y10 projects are more prescriptive in nature, however, as you move into Y11, you will be expected to write your own briefs, to select artists to respond to and work more independently.

The Art School is open to all Art students during lunchtimes, priority sessions and until 8.30pm on a Thursday night each week. Every half-term there is a life class you'll

be encouraged to attend. There is an expectation that Art students will spend at least two hours beyond taught lessons each week developing their work. Drawing is an essential part of all Art courses, as well as the ability to analyse the work of others, expressing your thoughts and opinions clearly in written form as well as visually.

### **This subject is for you**

If you don't mind working hard. You're creative and comfortable working independently. In Art, there is no such thing as right and wrong - so you'll enjoy exploring ideas, learning to be selective and creating displays of your own work in mini pop-up exhibitions.

### **Assessment**

60% coursework  
40% exam

### **For more information**

Mrs Garner, Head of Art  
s.garner@wsnl.co.uk



## Computer Science

GCSE

2 years

Cambridge iGCSE



Learn the principles and practices of computing and gain confidence in computational thinking and programming.

You'll learn to program by writing computer code and develop your understanding of problem-solving using computers.

You'll learn to appreciate current and emerging computing technologies and the benefits of their use, as well as the ethical issues and potential risks involved in digital technology.

You'll apply your understanding to develop computer-based solutions to problems, using algorithms and a high-level programming language. You'll also develop a range of technical skills as well as the ability to test effectively and to evaluate computing solutions.

Learning takes place in one of our three ICT suites, with lessons split between theory and practical. We

aim to ensure that every pupil learns to develop confidence and problem-solving skills, whilst learning a new computer language, right from the very start of the year.

This subject is taught in a supportive, friendly environment that encourages everyone to fulfil their potential.

### This subject is for you

If you enjoy solving problems. You'll have an aptitude for logical-thinking and attention to detail, but you'll also be creative. You'll be excited by the idea of learning new skills and putting them into practice.

### Assessment

100% exam

### For more information

Mr Smith, Teacher of  
Computer Science & ICT  
[i.smith@wsnl.co.uk](mailto:i.smith@wsnl.co.uk)

### This subject is for you

If you enjoy problem-solving, being creative and are keen to develop your skills through a combination of practical and real-world design challenges.

You will be excited by new challenges and open-ended problems.

### Assessment

50% coursework  
50% exam

### For more information

Mr Duckering, Head of DT  
[g.duckering@wsnl.co.uk](mailto:g.duckering@wsnl.co.uk)



## Design & Technology

GCSE

2 years

AQA



Investigate a host of different influences on design and technology, gaining a real understanding of what it means to be a designer.

You'll take part in both practical and theoretical study and enjoy opportunities to put your learning into practice by creating a variety of products.

The concept of sustainability is also introduced as well as learning about the impact of different materials on the environment and the increasing need for products to be environmentally-friendly.

Lessons take place in our well-equipped, custom-built, Design and Technology school – including a spacious workshop and extensive CAD/CAM facilities.



## Drama and Theatre Studies

GCSE

2 years

AQA



Learn about a wide variety of different ways in which theatre is created, what it means to us as human beings and how to create it successfully for yourself.

You'll study a wide repertoire of historical and modern theatre, from researching and investigating real life human topics, and learning to understand and use the various components to create a theatre production.

Much of your learning will take place through experimentation, and the drama studio is a perfect environment you to work in small groups with other pupils, under the direction and guidance of your teacher. Theoretical knowledge will be introduced and explored in a practical context before being further investigated through written assignments. Watching live theatre is, of course, essential and there are regular opportunities for this.

### This subject is for you

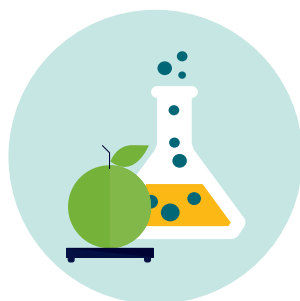
If you already love theatre and performance, or wish to increase your ability, skills, knowledge and importantly – confidence. You can be a shrinking violet or comfortable in the limelight, but successful participation is equally possible. Knowing there are no limits to how something may be interpreted on stage is an exciting concept and this subject invites you to take up that challenge.

### Assessment

60% coursework (practical drama)  
40% exam (discussion of practical drama and methodology)

### For more information

Miss Grant, Head of  
Drama and Theatre  
[j.grant@wsnl.co.uk](mailto:j.grant@wsnl.co.uk)



## Food Preparation and Nutrition

GCSE

2 years

Eduqas



A highly creative course, your focus will be on developing practical cooking skills to ensure you develop a thorough understanding of nutrition, food provenance and the characteristics of different types of food. At its heart, this qualification focuses on nurturing practical cookery skills to provide a strong understanding of nutrition.

You'll be involved in a mixture of theory and practical work – including culinary skills and food science investigations. Although there is a strong practical element to this course, there is also a theoretical component, as you learn about the effects of food on the body, how food is grown and the industries it supports.

Your lessons will take place in our dedicated Food & Nutrition Department, as well as across our ICT suites.

### This subject is for you

If you enjoy hands-on practical work, food and science. You will have an interest in cooking in the kitchen at home, as well as being organised! You'll enjoy testing out new ingredients as well as understanding why ingredients behave in the way they do.

### Assessment

50% coursework (two pieces) –  
including a practical assessment  
50% exam

### For more information

Mrs Scoular, Head of Food & Nutrition  
[e.scoular@wsnl.co.uk](mailto:e.scoular@wsnl.co.uk)



---

## Music

---

GCSE

---

2 years

---

Pearson

---



For keen musicians, the GCSE course is a natural progression from Year 9 and seeks to develop musicianship through focus on the key areas of performing, composing and understanding music.

You'll develop the skills to organise musical ideas and make use of appropriate resources, broadening your musical experience and interests in a way that develops imagination and fosters creativity.

At the beginning of the course, you will be taught the fundamentals of composition through short tasks. The best composers develop their ideas through experimentation and refinement of ideas played on their instrument. These are then transferred onto specialist notation software for easy editing and playback, giving you an immediate realisation of your creative ideas. Listening and appraising skills are taught via study of set works and these form the basis of the examination.

Your lessons will take place in the Mountgarret Music school, which houses our 9-foot Grotian Steinweg concert grand piano, composition-focused computer suite and a recording studio. Most students also attend our Music Department foreign tours and day trips.

### **This subject is for you**

If you have an aptitude for developing thoughts independently and musical ideas linger in your mind. You'll enjoy a wide range of musical styles and will be excited by learning to recognise contrasting genres, styles and traditions of music.

### **Assessment**

60% coursework (30% Performance, 30% Composition)

40% examination

### **For more information**

Mr Uglow, Director of Music  
[t.uglow@wsnl.co.uk](mailto:t.uglow@wsnl.co.uk)



---

## Physical Education

---

GCSE

---

2 years

---

Eduqas

---



Physical Education is an increasingly respected and popular subject for pupils to study at GCSE level - examining the effects of exercise and training on performance.

We have a long history of sporting excellence at Worksop College, boasting a number of sporting greats across a wide variety of sports.

Taking a GCSE in Physical Education is ideal preparation for our A level PE qualification, and the course content links closely to Biology and Food Preparation & Nutrition.

During this course, you will have the opportunity to specialise in one sport, develop an ability to coach or officiate – as well as apply your knowledge of the subject matter to a piece of coursework relating to your own practical strengths.

### **This subject is for you if**

You are interested in the way the body works and how physical exercise can have an impact. During this course, you will have the opportunity to be assessed in 3 sporting activities, one being individual and one being a team game. You will also be able to apply your knowledge of the subject matter to a piece of coursework and complete an 8 week training programme.

### **Assessment**

60% exam

40% practical

### **For more information**

Mr Baker, Head of PE  
[r.baker@wsnl.co.uk](mailto:r.baker@wsnl.co.uk)





---

## Business

---

GCSE

---

2 years

---

Pearson Edexcel

---



Study this course and you will learn the steps you need to take when starting and then growing a business. From marketing to raising finance, people management to operations - this course is an exploration of the world of business.

During this course, you will learn about how businesses work. You'll learn how to put together a business strategy and the key elements of the marketing mix. You'll work on real-life briefs and visit businesses to understand how strategy is put into practice.

You will also develop an appreciation of globalisation, and how the internet and digital era has transformed the way we do business - creating both opportunities and threats for businesses of all shapes and sizes.

You'll have the opportunity to hear from business speakers, as well as visit a number of organisations to understand how this works in practice.

### **This subject is for you**

If you want to develop an understanding of the world of business. This course provides a great foundation to go on to study a business-related subject at A level, such as Business or Economics.

### **Assessment**

100% exam

### **For more information**

Mr Meredith, Head of Economics and Business  
o.meredith@wsnl.co.uk



---

## Child Development

---

2 years

---

Cambridge Nationals

---



Offering a 'real-life' element as pupils work with our youngest learners at Ranby House School, pupils can expect hands-on, vocational opportunities - making this qualification perfect for those exploring career options in education or professional childcare.

### **Health and well-being for child development**

This unit provides an overview of parenthood's roles and responsibilities, from pre-conception through antenatal to postnatal care. Pupils develop an appreciation of the importance of creating the best conditions for a child to thrive.

### **Understand the equipment and nutritional needs of children from birth to 5 years**

Pupils learn about the range of equipment and nutritional and hygiene requirements of children from birth to five years in a practical setting.

### **Understand the development norms of a child from birth to 5 years**

Pupils investigate children's developmental norms from birth to five years and develop an understanding of the impact. Knowledge and understanding is demonstrated through practical activities.

### **This subject is for you if:**

You are interested in child development and exploring primary teaching or professional childcare as a career option

### **Assessment**

60% coursework

40% exam

### **For more information**

Mrs Scoular, Teacher of Child Development  
e.scoular@wsnl.co.uk



---

## Psychology

---

GCSE

---

2 years

---

OCR

---



Our Psychology GCSE is made up of two components over two years. In the first component we research criminal psychology, developmental psychology and psychological problems; in the second, we look into social influence, memory, sleep and dreaming.

Through these topics, we delve into the many facets of Psychology, developing an understanding of human behaviour from cognitive perspectives (understanding thought and mental processes), social perspectives (the impact of society and the environment on human behaviour) and biological perspectives (considering brain structure and genetics).

We also focus heavily on research methods used by Psychologists, critically assessing the science that underpins research into human behaviour.

Psychology is a subject which complements most other GCSE choices and which can lead to professions in a broad variety

of sectors; from education and sport to forensics and health.

### **This subject is for you**

You are interested in learning about human behaviour and the principles that underpin it. You'll have an inquisitive mind that will question the scientific nature of human research.

### **Assessment**

100% exam

### **For more information**

Mr Jordan, Head of Psychology  
[d.jordan@wsnl.co.uk](mailto:d.jordan@wsnl.co.uk)



---

## Supervised Study

---



We recognise that taking four GCSE options (on top of the four core subjects) may not be an appropriate choice for everyone. For some students, having more time to focus on fewer subjects is a better option – often leading to stronger results.

Selecting 'Supervised Study' instead of a fourth subject enables a pupil to benefit from four dedicated study periods each week. Pupils should discuss this option with Miss Dalby, the Head of Key Stage 4, before selecting this option.

—

## **Contact us**

Call 01909 537 100

Email [admissions@wsnl.co.uk](mailto:admissions@wsnl.co.uk)

**[wsnl.co.uk](http://wsnl.co.uk)**