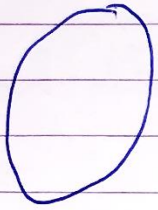
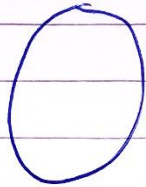


# Experiment

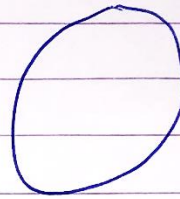
We are seeing if mustard seeds cope better in dry or wet environments, I will not tell you how much water I put on each tub.



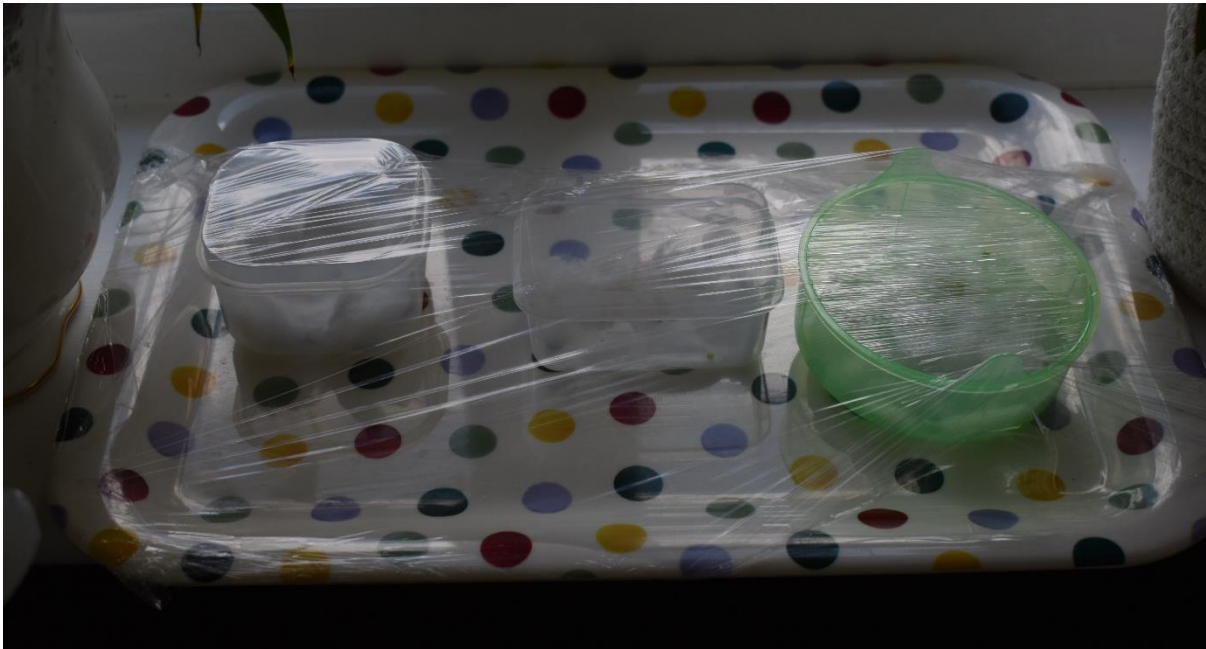
Tub 1  
0 ml



Tub 2  
15 ml



Tub 3  
45 ml



# Day 1

Day 1 12/5/2020

To day was the day I planted the seeds so they had not started germination yet so there was not much to see.

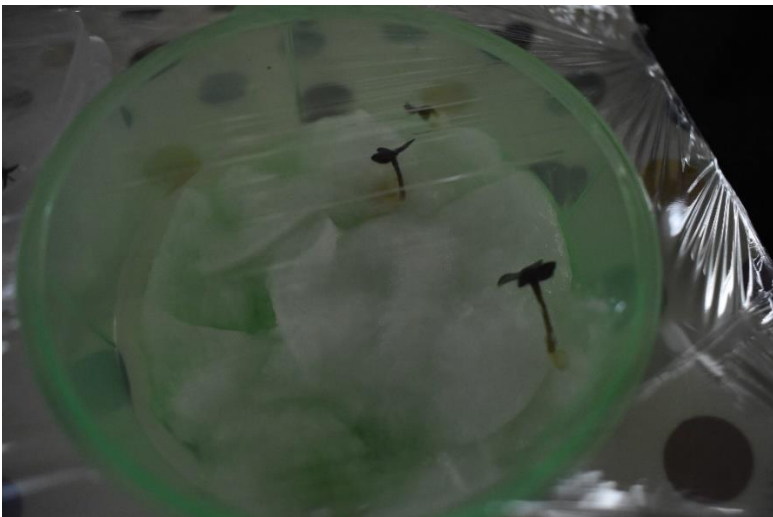
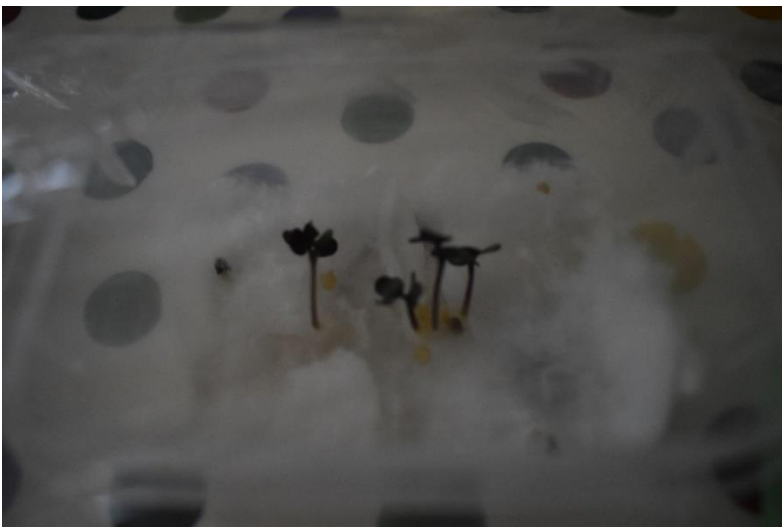




# Day 3

Day 3 15/5/2020

There has been a big change in tub 2 and 3 have germinated  
Tub 1 Nothing has happened



# Day 6

Day 6 17/5/2020

They are now growing and getting taller, so they are set in to the germination process.

